



STRONG ROOTS

NURTURING OUR FUTURE

KRAMER EARLY CHILDHOOD CENTER CAPITAL CAMPAIGN

“An investment in high-quality early childhood education not only levels the playing field for our at-risk children, it yields more stable communities, a more qualified workforce, reduced crime rate and greater social cohesion long term.”

—Senator John Stinner, Legislative District 48

WELCOME

We are excited to announce the anticipated opening of our community-based Early Childhood Education Center in January 2022. We believe an investment in Early Childhood Education and quality child development directly affects our local businesses and our economy. In addition, it engages parents and families while helping build a strong and vibrant community. It is time to invest in the development of our youngest community members.

Also included in this guide you will find additional opportunities for sustainability and continued expansion in our STEM program, STEM on the Go, and the Columbus Public Schools After School Programs. Columbus Public Schools continues to explore future growth in all of these programs and opportunities to all K-12 students.

We acknowledge that in order for Columbus to continue to grow and prosper, we must be able to sustain the future of current programs, while looking to future pathways. Over the past five years, we have been a leader in the state of Nebraska in preparing our students for careers and college. It is our goal to continue to support growth in Columbus and expand our programs and partnerships with stakeholders.



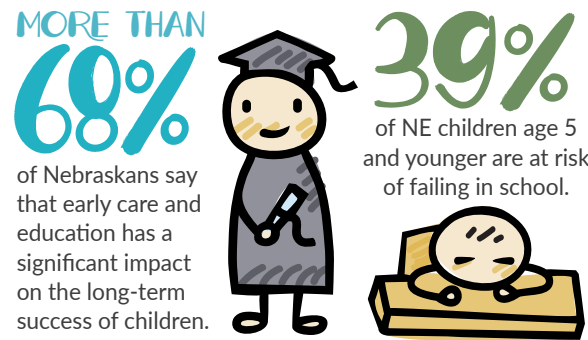
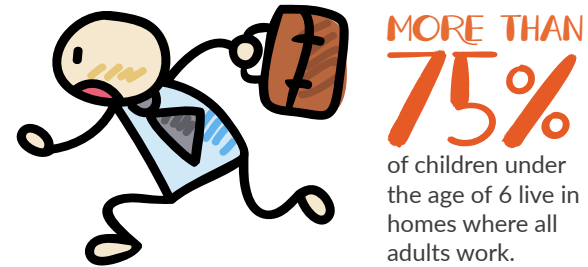
WHAT IS HIGH QUALITY EARLY CHILDHOOD EDUCATION & CHILD CARE?

Center-based programs that have positive impacts on young children's development provide some combination of the following features:

- Highly-skilled staff
- Small class sizes and high adult-to-child ratios
- Language-rich environment
- Age-appropriate curricula and stimulating materials in a safe, physical setting
- Warm, responsive interactions between staff and children



WHY HIGH-QUALITY EARLY CHILDHOOD EDUCATION & CARE IS IMPORTANT



- Quality ECE is an effective way to fight intergenerational poverty.
- Investing in comprehensive birth-to-five ECE is a cost effective way to mitigate the negative consequences of poverty on child development and adult opportunity.
- More productivity, less costly social services.
- Short-term benefits in workforce gains, long-term benefits in the future workforce.
- Access to quality ECE for disadvantaged families is essential for a thriving economy.

HOW IMPORTANT IS HIGH-QUALITY EARLY CHILDHOOD EDUCATION & CARE IN COLUMBUS?

COMMUNITY MEMBERS ANSWERED:



1,632 Number of children under the age of 6 with all available parents working

182 Total number of public Pre-K and EHS/HS spots

1,305 Total number of licensed childcare spots

298 Number of children under age of 6 not enrolled in a private licensed or public preschool

ALMOST 40% of Columbus residents say in the last twelve months, a lack of child care has caused them to miss work, be tardy, or cause a distraction at work.

70% of Columbus residents rank high-quality preschool and childcare availability for the future growth & development of Platte County as high priority.

In 2019, **92%** of kindergarteners and **90%** of 1st graders, who had no evidence of preschool, **SCORED BELOW** standards in the fall math and reading MAP test.

KRAMER EDUCATION CENTER GOALS

Community-Based Services

To include: Immunizations, health and dental screenings, availability for mental health services, and other family-based social services.

Kindergarten Plus

To Provide: an additional educational opportunity for children who are not physically or socially and emotionally ready for the next step of Kindergarten.

Pre-School

Half-day and full day program opportunities.

Early Program Opportunities (For children up to 3 years of age.)

To Provide: a capstone opportunity for learning prior to attending a four year old program.

Childcare

- Infant Care
- Before and After School Care
- Opportunities for school-based care or 3rd party providers within our facility

Workforce Development Opportunities

- Implement an opportunity to expand the Early Childhood workforce in our community through dual credit opportunities for CHS students by partnering with higher education institutions such as CCC, Wayne State & University of Nebraska at Kearney.
- Create a highly qualified and skilled training lab for students who are working toward a career or degree in Early Childhood Education.

The goal of the Columbus Public Schools
Board of Education is to champion for
more high-quality education opportunities
for every child from birth to age 5
in a community-based learning center.

Kramer Education Center





DISTRICT-WIDE CONTINUED SUSTAINABILITY AND PROGRAM GROWTH

In order to continue to inspire students to grow roots in the community and provide a deeper understanding of the opportunities within it, we continue to look at industry needs for greater workforce development.

Future Stem Pathways

- Business, Marketing & Management
- Healthcare
- Education
- Agriculture, Food & Natural Resources



STEM on the GO!

Our goal is to provide a new mobile learning lab highlighting virtual welding, 3D printing, robotics and mechatronics. Bridging the gap from CPS high school capstone classes to our middle school and elementary students remains a priority. This lab would also be available for community events and for use by other school districts.



AFTER SCHOOL PROGRAM

The Columbus After School Program is driven by local needs and operates out of 6 locations: Centennial, Emerson, Lost Creek, North Park, West Park and Columbus Middle School. Each day a snack is provided along with homework assistance and study time, followed by clubs. Support of this program aids in the development of strong social skills, the improvement of work habits and grades, improved school day attendance, and provides opportunities to explore career paths and gain workforce skills.



CPS FOUNDATION

The CPS Foundation enriches the educational experience of CPS students by funding innovation in teaching and learning that requires financial support beyond what the district can provide. The Foundation helps to provide for the immediate needs as well as long term enhancements within the CPS district.

The Foundation's mission is to inspire learning, enrich teaching and create opportunities for students and staff through local community connections, state affiliates such as the Nebraska Community Foundation, Columbus Area Future Fund and other foundations and philanthropic groups. The CPS Foundation is a proud member of the NAM, NAPSf and NASF.

We cannot continue to sustain existing programs, reach more students, and help close the gap between a quality workforce, early childhood education, and community growth without your help in conjunction with our Columbus Public Schools Foundation. Given the success of our STEM program, we look forward to a successful early education program with your help.

WHAT WILL BE YOUR LEVEL OF PARTNERSHIP?

- An experienced Early Childhood professional helps students and children develop and grow through play.
- An Early Childhood Resource plays a critical role in education by providing materials, transportation, and meals through funds, grants, employee collections or sponsorships. Material and equipment donations are also appreciated.
- An Early Childhood Supporter helps deliver a consistent message about the importance of early childhood education and childcare by providing testimonials and letters to school board, government and community organizations. Other ways of showing support are by displaying a visible commitment to early childhood education and providing commentaries in the media.

PHASE I: \$1,600,000

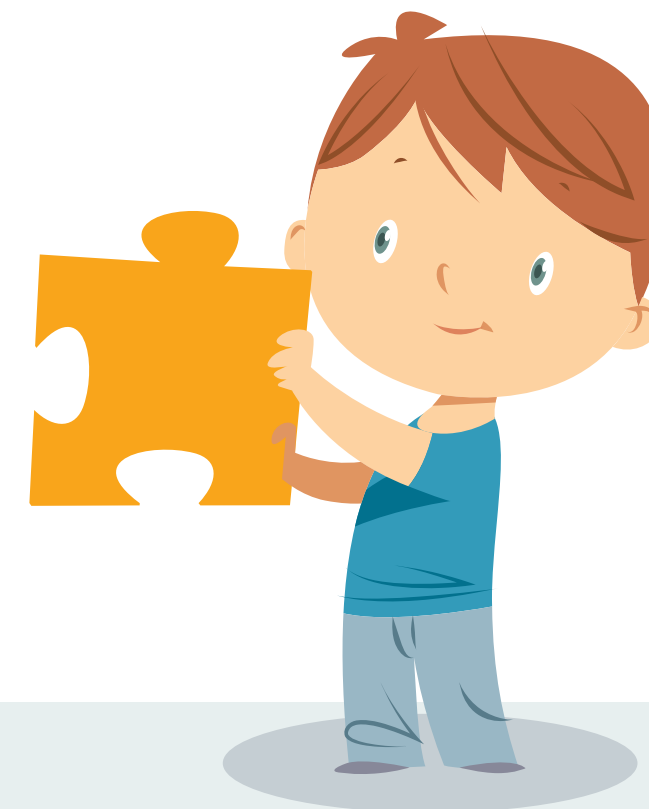
- Pursue outside grants that require matches
- Hire Early Childhood Director

PHASE II: \$1,300,000

- Build childcare facility
- Purchase equipment
- Begin hiring staff

PHASE III: \$1,000,000

- Program sustainability





402.563.7000 | andersonn@discoverers.org

2508 27th Street | Columbus, Nebraska, 68601

www.columbuspublicschools.org